



# Prüfzentrum für Bauelemente

Dipl.-Ing. (FH) Rüdiger Müller

Fenster · windows  
Rollläden · shutters  
Türen + Tore · doors  
Fassaden · curtain walling  
Baubeschläge · building hardware

## TEST CERTIFICATE NO. 15/01-A002-Z1

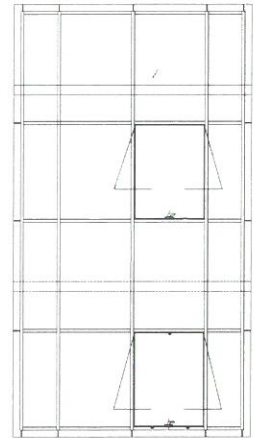
PfB-Internal-No. 18/10-A448

Version 1.en

Test of performance according to EN 13830 : 2003-11 "Curtain walling - Product standard" Air permeability, water tightness, resistance to wind load

**Applicant** Saray Döküm ve Madeni Aksamlar San.Tur.A.Ş.  
Bağlar mah. Osmanpaşa Cad. No:89  
Güneşli-Bağcılar / Istanbul – Pk. 34209  
Türkiye

**Product type** Curtain walling element consisting of aluminium profiles of the EF50 system with fourteen fixed glass field with insulating glazing and with two outward opening top hung window




**Product name** EF50 Kapaklı Cephe Sistemi

**Dimension** Total outside dimensions (W x H) max. 3660 mm x 6830 mm

**Classification** According to test report No. 15/01-A002-B1 from September 03, 2018:

EN 12153	Air Permeability	EN 12152	Class A4
EN 12155	Water tightness	EN 12154	Class RE1200
EN 12179	Resistance to wind load	EN 13116	± 1500 Pa

**Validity** Period of validity of EN 13830 : 2015-07

  
Dipl. Ing. (FH) Rüdiger Müller  
Head of Institute



  
Yiğit Altuğ  
Responsible Official